



# sanborn

www.sanborn.com  
1.866.726.2676



## Parcel Mapping

### Parcel Mapping for GIS

Rapid land development and increasing property values make it important for a community to maintain accurate parcel maps to identify and maintain the currency of the legal boundaries of public and private properties. Sanborn Parcel Maps are a detailed and accurate digital resource that commercial and public users can use to determine the location, size, shape, and parcel identification number for a specific property. This allows for easy identification of where a specific property is located relative to adjacent properties and public roadways. This is important information for planners, assessors, developers, and engineers with regard to compliance with local zoning regulations, modification and/or expansion of utility infrastructure, and for tax assessment purposes.

*Above: Sanborn converted the Town of Mamaroneck, NY, tax maps into a vectorized format. The project consisted of the unincorporated areas of the Town of Mamaroneck, Village of Larchmont, and a portion of the Village of Mamaroneck. In total 8,596 parcels contained on 272 mylar tax maps were vectorized into an AutoCAD format and digitized into one edge-matched seamless mosaic. Additionally, over 200 easements were digitized using COGO methodology. The parcels were then migrated into a custom geodatabase and linked to the Town's RPS.*

#### Who Benefits from Parcel Mapping

- State and Local Government
- Engineers
- Real Estate Developers
- City Planners
- Tax Assessors
- Public and Private Utility Services
- Commercial Real Estate and Private Homeowners

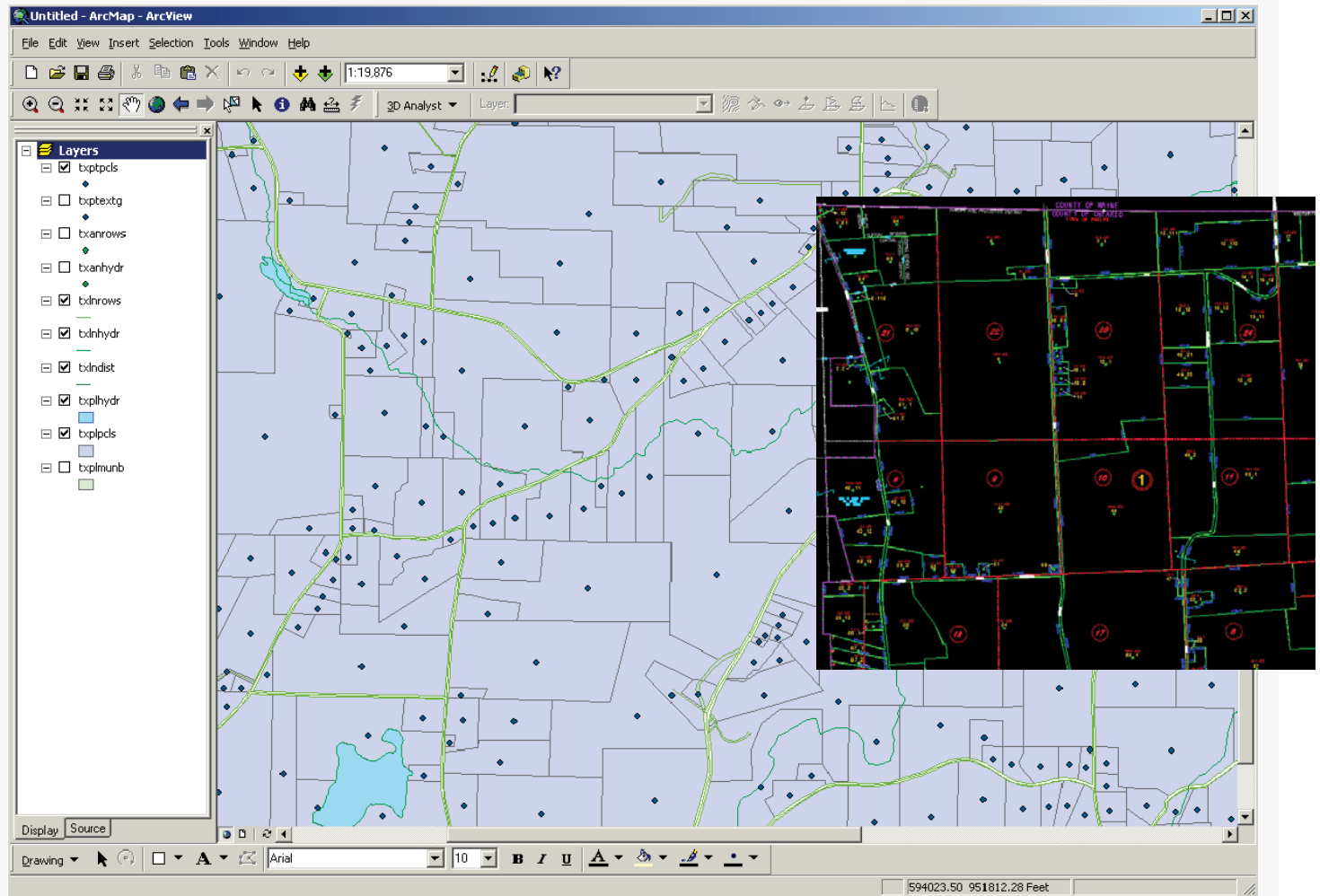
#### Applications

- Land Use Planning / Development
- Tax Assessment
- Engineering
- Utilities Surveys

Parcels are derived from existing maps (scans or hard copies) and legal information by geospatially registering imagery using a heads-up digitizing technique. Parcels also can be collected by employing COGO methods to enter the legal metes and bounds. These processes are used to create a new parcel base or update an existing base for AutoCAD or ESRI environments. Existing parcels may need to be topologically "cleaned" to eliminate slivers and gaps between parcels, and ortho imagery also may be used for greater accuracy in location of parcel lines. The final product may be delivered as a parcel fabric, simple shape file, or DWG depending on the needs of the user and their existing single-user or enterprise GIS systems.

By leveraging an expert team of GIS, Survey, and Project Management professionals employing leading-edge hardware and software techniques, Sanborn has completed parcel mapping projects and created databases for specific customer needs for many communities across the United States. These projects have ranged in scope from creating maps through cleaning and updating existing datasets, to developing custom parcel base maps from new data.

**Sanborn Parcel Mapping Case Study---Ontario County, New York**



**Sanborn Parcel Mapping Case Study: Ontario County, NY**

The Ontario County project entailed the conversion of existing tax maps from Mylar media to digital format, converting over 46,000 parcels (682 maps) into an AutoCAD Map and ArcGIS formats. LISP routines created for ease of maintenance in the AutoCAD environment. Upon completion and acceptance of the maps the files were rectified to NY State Plane NAD83 coordinate system. The recently supplied orthophotos from the NYS Digital Ortho Program were used in the rectification process.

A conversion program was developed using a VB interface with ArcGIS to convert AutoCAD files to shapefiles. The program incorporated customized features requested by the County. The shapefiles created are used to connect to the RPS database.

A comprehensive procedures manual was maintained throughout the duration of the project, and training was provided to the County to maintain the tax maps in both the AutoCAD and ArcGIS formats. In addition, a training manual was supplied to the County.

A system integration project is currently in development with the County which will allow users to pull various databases of multiple County departments through one convenient portal.

**Delivery formats**

- .dwg (AutoCAD), .dxf (Drawing exchange), .shp (ESRI), GeoDatabase Personal and Enterprise (ESRI)

**Conditions**

- Price catalog is subject to change. Shipping and handling fees may apply.
- Order acceptance subject to Sanborn approval
- Product warranted for 90 days as defined in the End User License Agreement

**How to order**

To order Sanborn Parcel Mapping products, contact Sanborn customer service at 1.866.SANBORN or e-mail [information@sanborn.com](mailto:information@sanborn.com).

**About Sanborn**

Sanborn is a 21st century industry leader in geospatial solutions and technology, offering superior services, program management, and customer support. For our clients we provide a national presence, extensive resources, quick responses, and exceptional value. For over a century, we have been a leader in the rapidly growing geospatial industry, with successful projects delivered worldwide. For more information, visit us online at [www.sanborn.com](http://www.sanborn.com), or call **1.866.726.2676** to speak with a representative.