

Since 1866
Sanborn
 Map
 Company
 Towns have relied on
 Sanborn Maps

INTRODUCING

Interactive Town Maps

Affordable, Efficient, Easy-to-Use Online Viewer

 **sanborn**
 www.sanborn.com

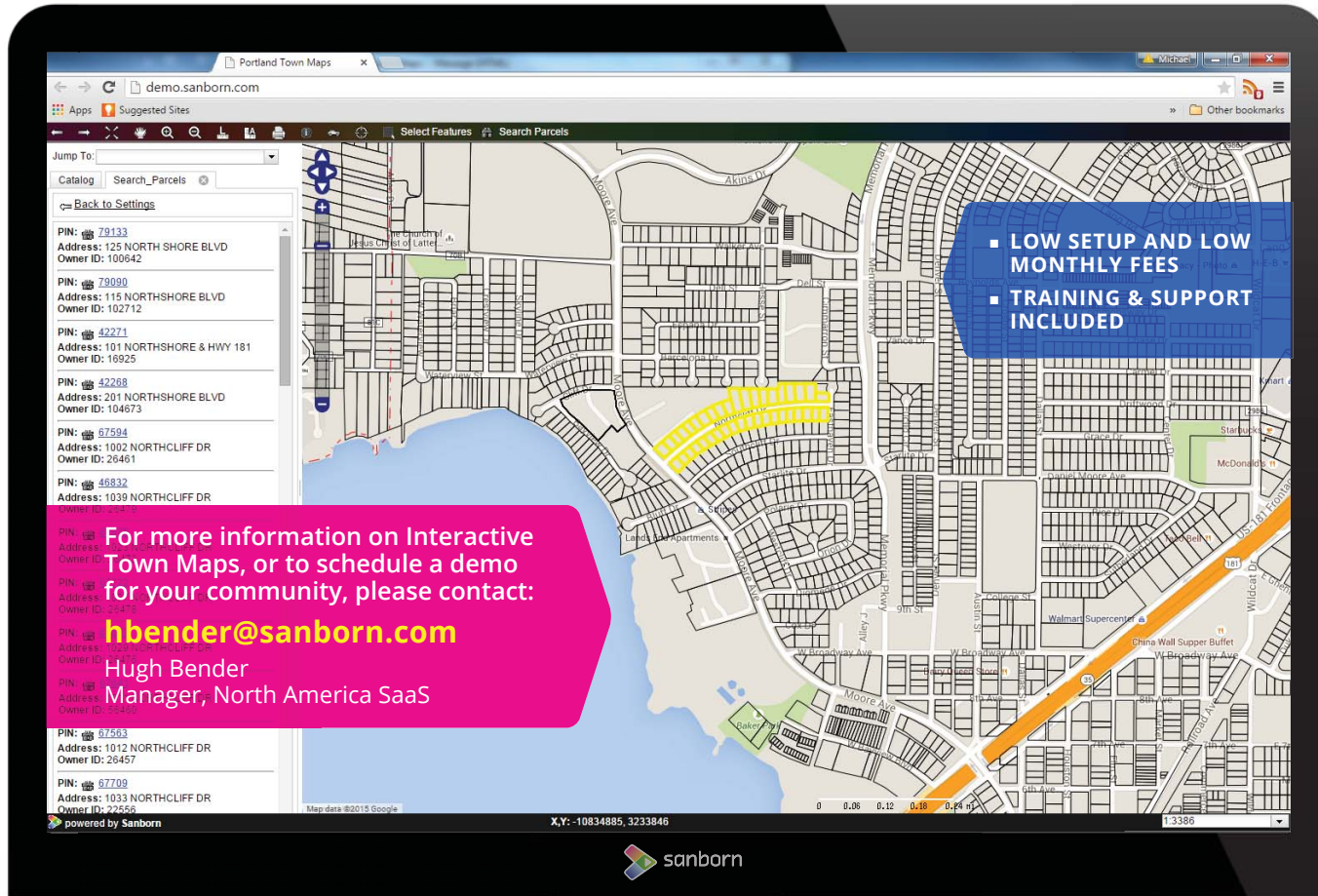
Affordable ✦ Efficient ✦ Easy-to-Use

All you need is a web browser!

YOU SELECT THE LAYERS TO BE INCLUDED IN YOUR TOWN MAPS*

- Parcels, streets, city limits, orthos, etc.
- Utilities, zoning, land-use
- Districts - Schools, Fire, Police, Voting
- Waste pickup locations / schedules
- Streams, rivers, lakes, ponds
- Floodplain, water wells, septic system locations
- Census, traffic count data
- New map layers easily added anytime
- Street View enabled

* Where available data exists



IDEAL FOR PLANNING: E911, UTILITIES, PARKS AND ASSET MANAGEMENT

- Increase productivity for city agencies and staff.
- Ideal for shared systems, economic development, chambers, historic groups.
- You own your data with access to Sanborn services - data conversion, aerial imagery, obliques, etc.
- 24 / 7 / 365 data accessibility.
- Multi-Level Security:
 - Free public viewer
 - Password protected staff viewer
 - Password protected administrative viewer



sanborn
www.sanborn.com

1935 Jamboree Drive, Suite 100
Colorado Springs, CO 80920
1.866.726.2676

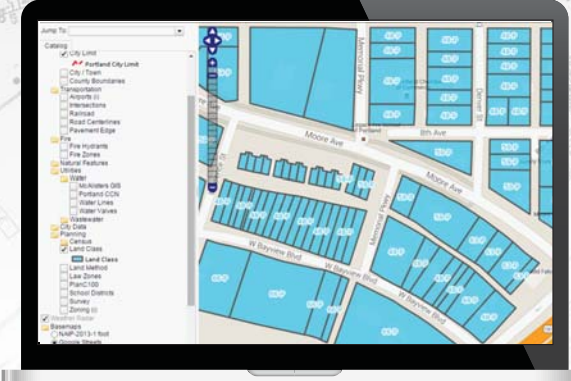
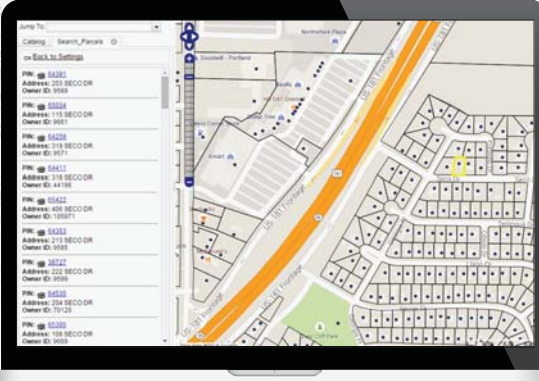
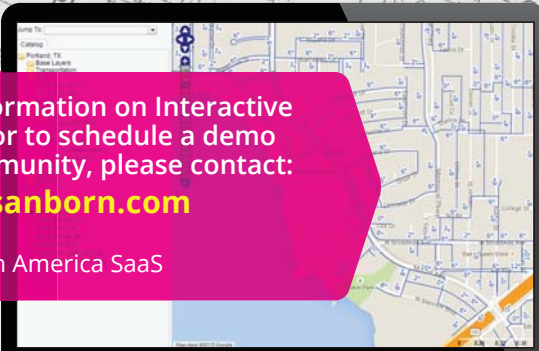
Known for 150 years across the United States as producers of Sanborn Fire Insurance Maps, Sanborn today is a 21st century industry leader in geospatial solutions and technology.

TOWN MAPS COMBINES YOUR COMMUNITY'S DIGITAL DATA WITH AN EXTENSIVE LIBRARY OF FREE DATASETS, VIEWED TOGETHER IN A SANBORN OPEN SOURCE VIEWER.

For more information on Interactive Town Maps, or to schedule a demo for your community, please contact:

hbender@sanborn.com

Hugh Bender
Manager, North America SaaS



1935 Jamboree Drive, Suite 100
Colorado Springs, CO 80920
1.866.726.2676