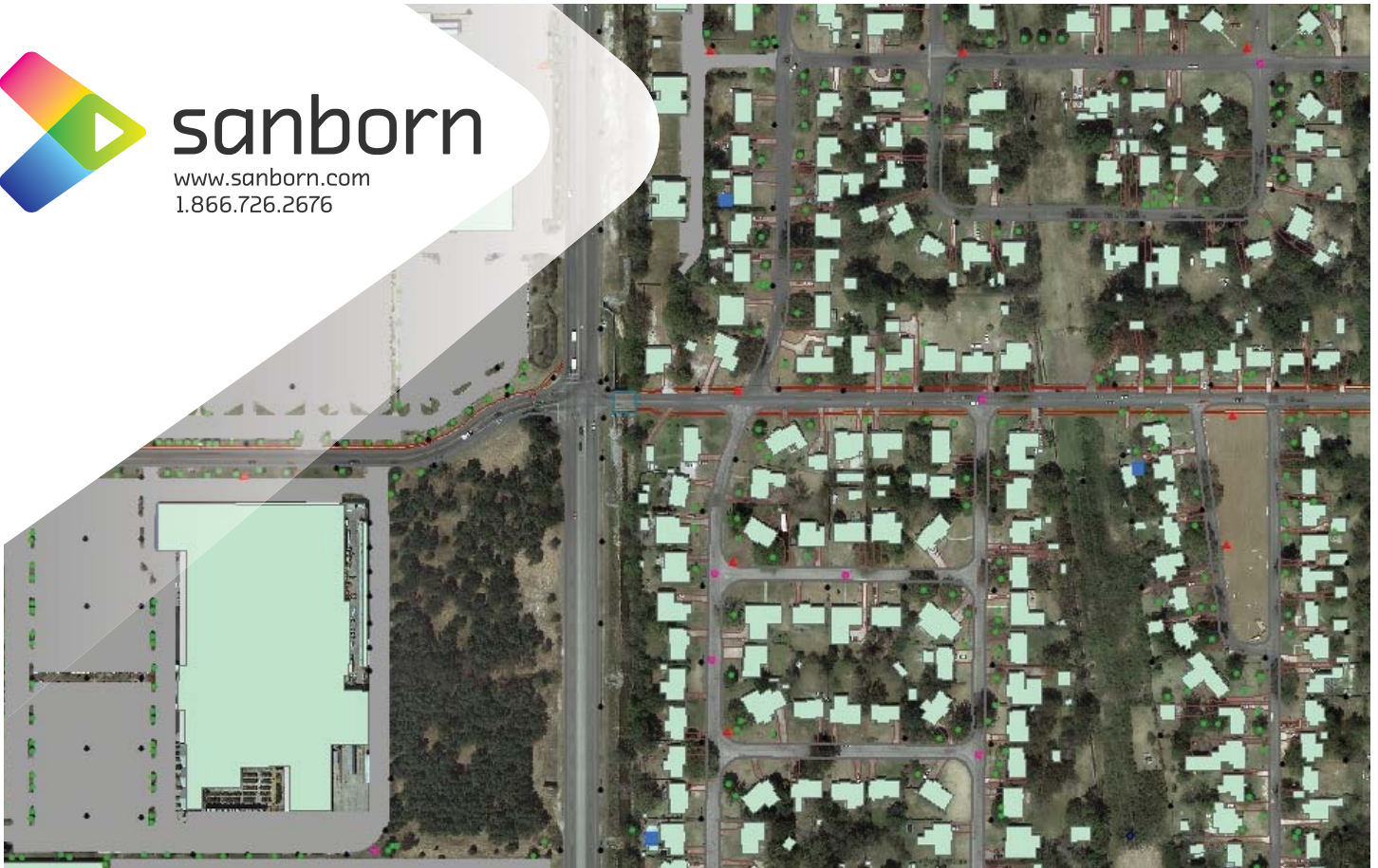




sanborn

www.sanborn.com
1.866.726.2676



Planimetric Mapping

Planimetric Features for GIS

Advances in technology have made geographic information systems more valuable than ever. Today's systems are more powerful and more complex than their recent predecessors. Professionals who depend on a GIS to help make important decisions based on geospatial information need a full-service, experienced source to help manage this sophisticated and indispensable tool, and increasingly they're finding it with Sanborn.

What is Planimetric Data?

Planimetric maps are maps showing only the horizontal position of features on the Earth's surface which reveal geographic objects, natural and cultural physical features, and entities without topographic properties. Topographic features not captured such as roads, buildings, and bodies of water that are visible and identifiable on aerial photographs can be compiled into map features through photogrammetric surveying procedures.

The Sanborn approach

Sanborn has great experience digitizing planimetric data from aerial photography for use as a base layer of a GIS. With speed and consistency intrinsic to our data processing, Sanborn produces accurate and aesthetically pleasing planimetric data that can meet the specifications of any GIS, using:

- Enhanced editing
- True polygon topology
- Programming functions
- QC functions

Sanborn Planimetric Product

Sanborn Planimetric data product reveals map features that illustrate the following surface categories:

Planimetric Base Product *(see chart on back for details)*

- Paved & unpaved surfaces
- Distributed areas
- Water structures
- Vegetation
- Railroads
- Barriers
- Water features
- Landmarks
- Airport
- Structures
- Utilities
- Water features
- Street hardware

Value-add options

- Annotation & attributes:
 - building names / road names / hydro names
- Street centerlines
 - Calculated from road edges
 - Optional attribution
 - Street prefix, name, type, suffix
 - Address ranges
 - Others
- Hydro centerlines
 - Hand placed through water-bodies for a better aesthetic look
 - Optional attribution

Planimetric Base Product Feature List

	50' scale	100' scale	200' scale		50' scale	100' scale	200' scale		50' scale	100' scale	200' scale
Feature	Rates	Rates	Rates	Feature	Rates	Rates	Rates	Feature	Rates	Rates	Rates
Roads, paved/unpaved				Disturbed Areas				Airport			
Roads	98%	95%	85%	Pile (sand/gravel)	98%	95%	90%	Runway	100%	100%	100%
Shoulder	98%	90%	-	Construction Site	98%	95%	90%	Taxiway	100%	100%	-
Driveways	95%	85%	80%	Quarries	98%	98%	95%	Apron	100%	100%	-
Parking	95%	90%	85%	Open Mine	98%	98%	95%	Runway/taxiway lights	90%	-	-
Concrete	95%	-	-	Rock Outcrop	95%	85%	-	Paint lines	98%	90%	-
Alleys	98%	95%	85%	Boulders	95%	85%	75%	Helipad	100%	100%	-
Sidewalk-private/public	95%	75%	-	Disturbed Areas	95%	95%	95%	Runway/taxiway signs	98%	-	-
Curb	95%	-	-	Lakes	98%	95%	95%				
Steps	95%	-	-	Rivers	100%	99%	99%	Barriers			
Trails	95%	85%	80%	Streams/Creeks	98%	95%	90%	Fences	95%	80%	75%
Road median/island	95%	-	-	Concrete Drain	95%	90%	-	Guard rails	98%	85%	75%
Golf cart paths	95%	95%	-	Ponds	98%	95%	95%	Walls	95%	75%	75%
				Reservoirs	98%	95%	95%	Retaining walls	95%	75%	75%
Structures				Ditches	98%	95%	90%	Gates	95%	-	-
Buildings/courtyards	98%	92%	95%	Marsh/swamp	95%	90%	85%	Cattle guards	95%	-	-
Ruins	95%	95%	90%	Beach	99%	99%	99%	Rock walls	95%	75%	-
Decks >100 sq ft.	98%	90%	-					Water Structures			
Patios >100 sq ft.	95%	90%	-	Vegetation				Bridges	99%	98%	95%
Canopies >100 sq ft.	95%	90%	-	Tree outlines	95%	90%	80%	Dams	99%	98%	85%
Tanks	98%	95%	95%	Single trees	80%	75%	-	Earth dam	98%	95%	65%
Propane tanks	98%	75%	-	Single bushes	70%	-	-	Piers	98%	95%	95%
Silos	98%	95%	90%	Brush outline	95%	90%	-	Breakwater	95%	95%	-
Bunkers	95%	90%	80%	Orchards/nurseries	95%	95%	85%	Wall	95%	85%	-
Foundations	98%	95%	95%	Crops	95%	90%	-	Culverts, small (<20' length)	85%	75%	-
Smokestacks	98%	95%	90%	Hedges	75%	-	-	Culverts, large (>20' length)	98%	90%	50%
Water towers	100%	100%	100%					Restoration ponds	98%	-	-
Stairways	90%	-	-	Utilities				Hidden drains (for connectivity)	85%	-	-
Pool (below grnd)	98%	95%	-	Manholes*	85%	60%	-				
Pools (above grnd)	98%	95%	-	Catch basins*	85%	60%	-	Landmarks			
Windmill	99%	99%	-	Fire hydrants*	75%	40%	-	Golf Course outline	100%	100%	100%
Homes	95%	-	-	Water valves	25%	-	-	Greens	99%	95%	-
				Traffic signals	95%	85%	-	Tees	99%	95%	-
Street Hardware				Traffic signal poles	95%	85%	-	Sand traps	99%	95%	-
Large overhead signs	98%	90%	-	Light poles	95%	85%	30%	Public playgrounds	98%	95%	90%
Billboards	98%	90%	-	Utility poles	95%	90%	40%	Athletic fields	99%	95%	90%
Mailboxes	75%	-	-	Traffic signs	85%	-	-	Open storage	95%	90%	75%
Parking meters	60%	-	-					Cemeteries	100%	100%	95%
Bus stop shelters	98%	95%	-	Railroads				Tennis courts	98%	95%	-
Post	60%	-	-	Railroad	98%	90%	85%	Public parks	99%	98%	90%
Traffic signs	85%	-	-	Abandoned railroad	95%	90%	85%				
Flag poles	60%	-	-	Switches	95%	-	-				
(commercial govt.)				Crossing	98%	95%	98%				
Monuments	75%	-	-	Roundhouse	99%	99%	99%				

* Rate may be improved if feature is painted

Delivery formats

- .dwg (AutoCAD), .dxf (Drawing exchange), .shp (ESRI)

Conditions

- Price catalog is subject to change
- Order acceptance subject to Sanborn approval
- High relief and dense terrain areas subject to Sanborn approval
- Product is warranted for 90 days as defined in the End User License agreement

How to order

To order Sanborn Planimetric products, contact Sanborn customer service at 1.866.SANBORN or e-mail information@sanborn.com. Shipping and handling fees may apply.

About Sanborn

Sanborn is a 21st century industry leader in geospatial solutions and technology, offering superior services, program management, and customer support. For our clients we provide a national presence, extensive resources, quick responses, and exceptional value. For over a century, we have been a leader in the rapidly growing geospatial industry, with successful projects delivered worldwide. For more information, visit us online at www.sanborn.com, or call 1.866.726.2676 to speak with a representative.