

Sanborn CitySets®

DOWNTOWN DIGITAL DATA

The Sanborn CitySets® product line is a series of off-the-shelf digital data sets covering the core downtown areas of major cities across the United States. Sanborn CitySets® can provide valuable GIS data for:

- Emergency operations centers
- Department of Homeland Security
- Department of Defense
- Architectural and engineering firms
- Real estate developers
- Urban planning and transportation departments
- Security planning and training organizations
- Public and private utility providers

Geographic Information

- Building-specific data:
 - Accurate building footprints
 - Primary building addresses
 - Alternate building addresses
 - Building name(s)
 - Construction class, occupancy type, number of stories, year built, building height, square footage, and more
- Street centerlines with street names
- Select geographic features and landmarks (depending on city)
- Meets National Map Accuracy Standards (90 percent within 3.33 or 6.66 feet of true position, depending on city)
- Standard deliverable in ESRI shape file or

Sanborn Fire Insurance Maps®

- Detailed digital Sanborn Map® information-- the trusted fire insurance map since 1866
- Accurate geoplacement
- Seamless
- Full resolution
- Deliverable in georeferenced MrSid® format

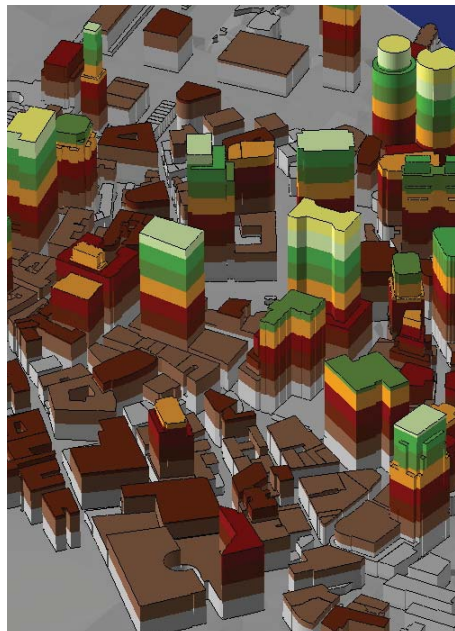
Digital Orthophoto Imagery

- Color imagery
- 6-inch or 1-foot pixel resolution
- Meets National Map Accuracy Standards (90 percent within 3.33 or 6.66 feet of true position, depending on city)
- Seamless and color balanced
- Available in local State Plane coordinate system
- Orthomosaic deliverable in MrSid® format
- Imagery collected 2002 or later

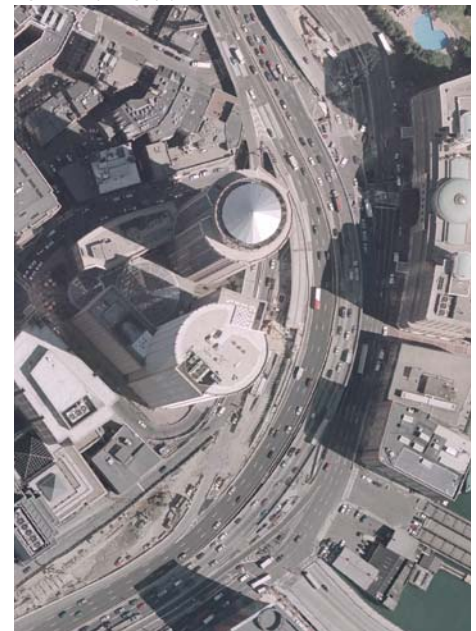
3D Models

- Highly accurate 3D building models
- Standard deliverable in ESRI z-shape file
- Files can be converted by users to support:
 - AutoCAD
 - Google KML
 - Openflight
 - 3D Studio File Format
- Bald earth terrain surface model included (format: ESRI TIN or GRID)

3D Models



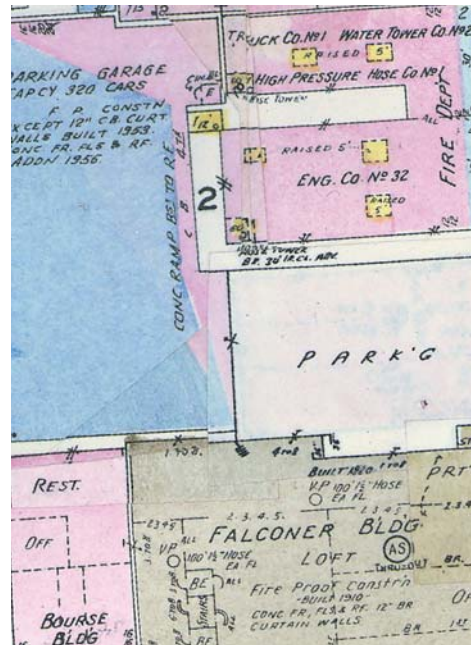
Digital Orthophotography



Geographic Information



Sanborn Fire Insurance Maps





CitySets® data is currently available for the following U.S. cities:

City	2D & 3D Building (Sq. Mi.)	6-Inch Orthoimagery (Sq. Mi.)	1-Foot Orthoimagery (Sq. Mi.)	City	2D & 3D Building (Sq. Mi.)	6-Inch Orthoimagery (Sq. Mi.)	1-Foot Orthoimagery (Sq. Mi.)
Arlington/pentagon City	4.6	4.6	4.6	Manhattan	10.2	10.2	100.0
Atlanta	3.3	3.3	3.3	Memphis	3.8	-	50.0
Baltimore	2.4	2.4	50.0	Miami	4.0	4.0	100.0
Boston	3.0	3.0	100.0	Minneapolis	2.0	2.0	2.0
Brooklyn	2.0	2.0	2.0	Newark	3.4	-	100.0
Buffalo	3.5	-	50.0	New Orleans	3.2	3.2	50.0
Chicago	15	15	140.0	Philadelphia	5.3	5.3	100.0
Cincinnati	3.8	-	50.0	Phoenix	4.2	-	100.0
Cleveland	3.8	-	50.0	Pittsburgh	3.7	-	50.0
Dallas	3.8	3.8	50.0	Portland	1.4	1.4	50.0
Denver	2.0	2.1	100.0	Sacramento	3.1	-	65.0
Detroit	2.8	2.8	100.0	San Diego	2.1	2.1	100.0
Ft. Lauderdale	3.6	3.6	3.6	San Francisco	5.8	5.8	100.0
Honolulu	3.8	-	50.0	Seattle	3.6	3.6	125.0
Houston	3.4	3.4	100.0	St. Louis	4.8	4.8	50.0
Jersey City	3.5	3.5	3.5	St. Paul	1.2	1.2	4.8
Kansas City	3.8	-	50.0	St. Petersburg	2.6	2.6	2.6
Las Vegas	6.3	6.3	6.3	Tampa	0.9	0.9	50.0
Long Beach	3.2	-	50.0	Washington, D.C.	7.4	7.4	130.0
Los Angeles	10.2	10.2	100.0				

Conditions

- Pricing catalog is subject to change.
- Product is warranted for 90 days as defined in the End User License Agreement
- Most orders can be shipped within 48 hours from date of purchase (depending on the size of the order)
- Shipping and handling fees may apply.

How to order

To order Sanborn CitySets® products or for information about cities not listed, cities to be updated, or for specific Sanborn CitySets® details and pricing, contact Sanborn customer service at 866.SANBORN or email information@sanborn.com.

About Sanborn

With a rich tradition of mapping dating back to 1866, Sanborn offers end-to-end geospatial solutions backed by the latest in technology and superior customer support. The company's combined product and service offerings include consulting and off-the-shelf products, analog, digital, and LiDAR data acquisition, photogrammetric mapping, remote sensing solutions, and data conversion. Sanborn offers product solutions for government and commercial customers. A nationally recognized company, Sanborn has multiple offices in the United States. www.sanborn.com